

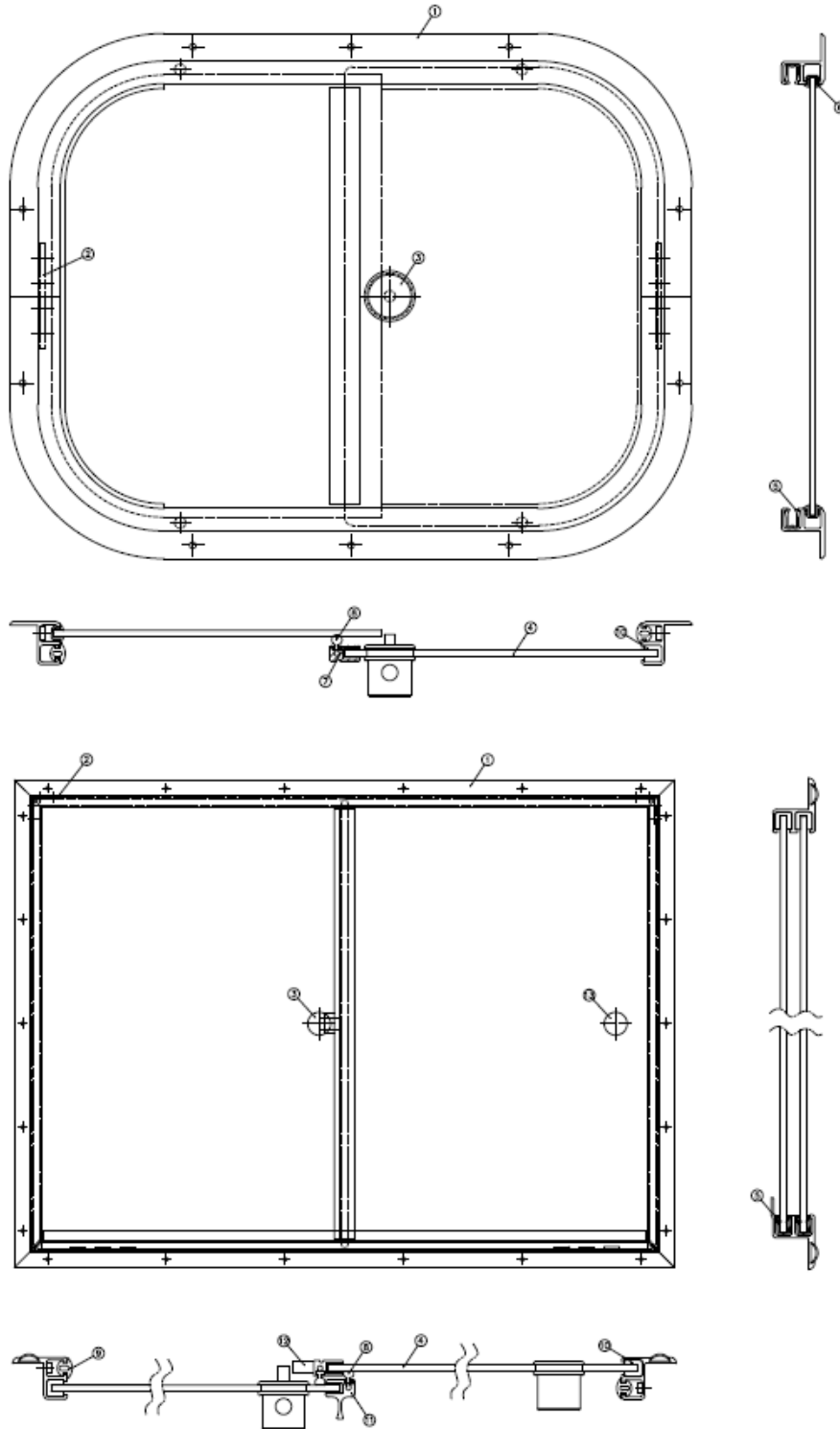


## CONTENTS

FIG 1: UNIT CROSS SECTION	Page 4
PREVENTATIVE MAINTENANCE	Page 5
REPLACEMENT PROCEDURES: SLIDER PLASTIC	Page 6
REPLACEMENT PROCEDURES: SLIDING FELT	Page 7
REPLACEMENT PROCEDURES: GLASS	Page 8
REPLACEMENT PROCEDURES: CATCH / DUMMY CATCH	Page 9
REPLACEMENT PROCEDURES: CATCH BLOCK	Page 10
REPLACEMENT PROCEDURES: SEALS	Page 11

SLIDING WINDOW MAINTENANCE MANUAL

WINDOW CROSS SECTION



Key

1. Outer frame
2. Joint lug & screws
3. Catch
4. Glass
5. Slider plastic
6. Gasket
7. Draughttrail
8. Seal
9. Filler rubber
10. Felt
11. Fingerpull
12. Catch block
13. Dummy catch



# SLIDING WINDOW MAINTENANCE MANUAL

## GENERAL NOTE

Throughout this manual you will find numbers in brackets in the main text. These numbers should be read in conjunction with the window cross section on page 4 of the maintenance manual.

## PREVENTATIVE MAINTENANCE

In order for the unit to work correctly over its lifetime the following procedures must be completed periodically as stated...

A visual examination of the unit checking for dents, cracks or marks that may affect the integrity of the unit. As well as any items that have aged or are loose that may affect the operation of the unit. All areas shown in the window cross section on page 4 of the maintenance manual should be examined.

1. Full opening and closing of the unit ensuring the unit seals when closed; and opens smoothly to its full extent without foul.

### Maintenance

### Frequency

Visual examination of unit.	Minimum of once per Month.
Clean the unit	Once a month
Unit opening and closing.	Minimum of once per week.
Replace slider plastic	As required (2 years minimum)
Replace felt	As required (2 years minimum)
Replace Seals	As required (2 years minimum)

To validate warranty the customer is required to provide PLP with written maintenance documentation providing evidence of product upkeep in line with this manual recommendations.

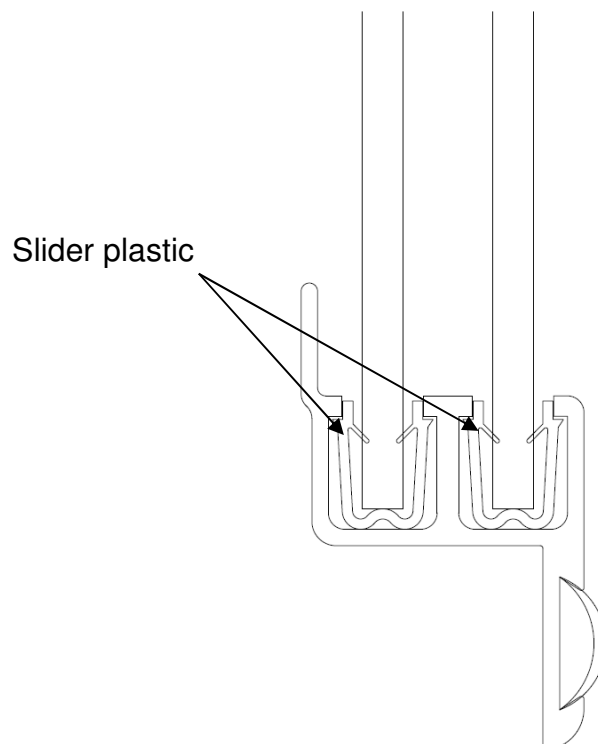


## SLIDER WINDOW MAINTENANCE MANUAL

### SLIDER PLASTIC REPLACEMENT (5)

(To replace glass the frame must be free from vehicle).

1. Remove entire unit from vehicle.
2. Place on workbench.
3. Unscrew the joint lug screws and keep for re-assembly.
4. Dismantle framework.
5. Slide glasses out of channels.
6. Using a flat ended screwdriver prise / unclip the slider plastic out of the channel.
7. Push fit replacement slider plastic into channel.
8. Re-assembly is the reverse of removal (seal around rail ends with sealant).
9. Check for water ingress.
10. Reseal if required.
11. Check unit operation.
12. End.



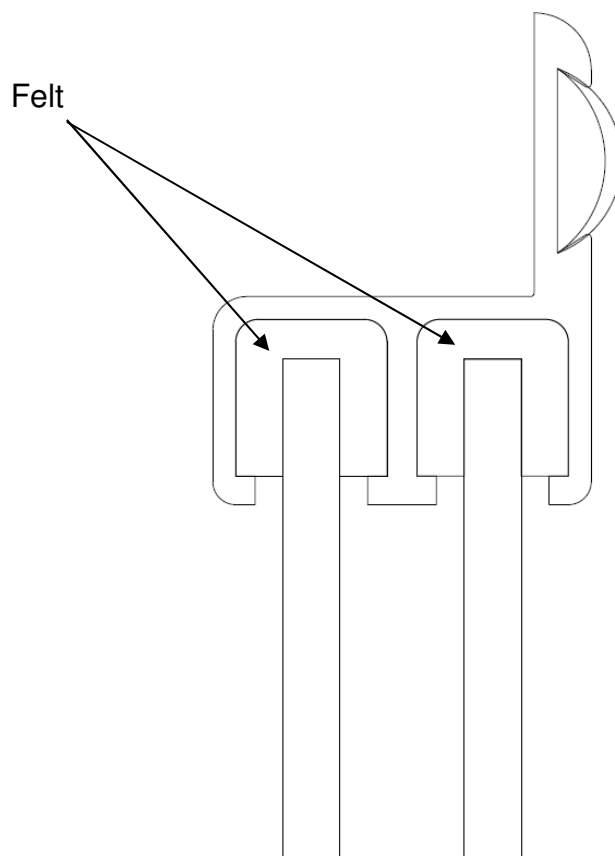


## SLIDER WINDOW MAINTENANCE MANUAL

### FELT REPLACEMENT (10)

(To replace glass the frame must be free from vehicle).

1. Remove entire unit from vehicle.
2. Place on workbench.
3. Unscrew the joint lug screws and keep for re-assembly.
4. Dismantle framework.
5. Slide glasses out of channels.
6. Remove the felt from the channels.
7. Remove any remaining adhesive.
8. Apply new adhesive (Bostik c) and fit new felt.
9. Re-assembly is the reverse of removal (seal around rail ends with sealant).
10. Check for water ingress.
11. Reseal if required.
12. Check unit operation.
13. End.



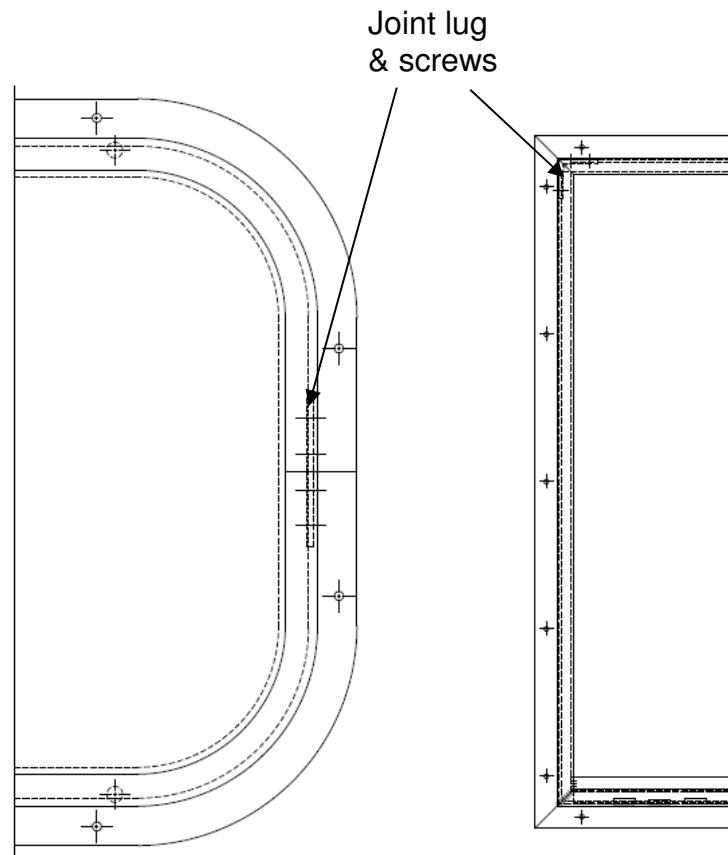


## SLIDER WINDOW MAINTENANCE MANUAL

### GLASS REPLACEMENT (4)

(To replace glass the frame must be free from vehicle).

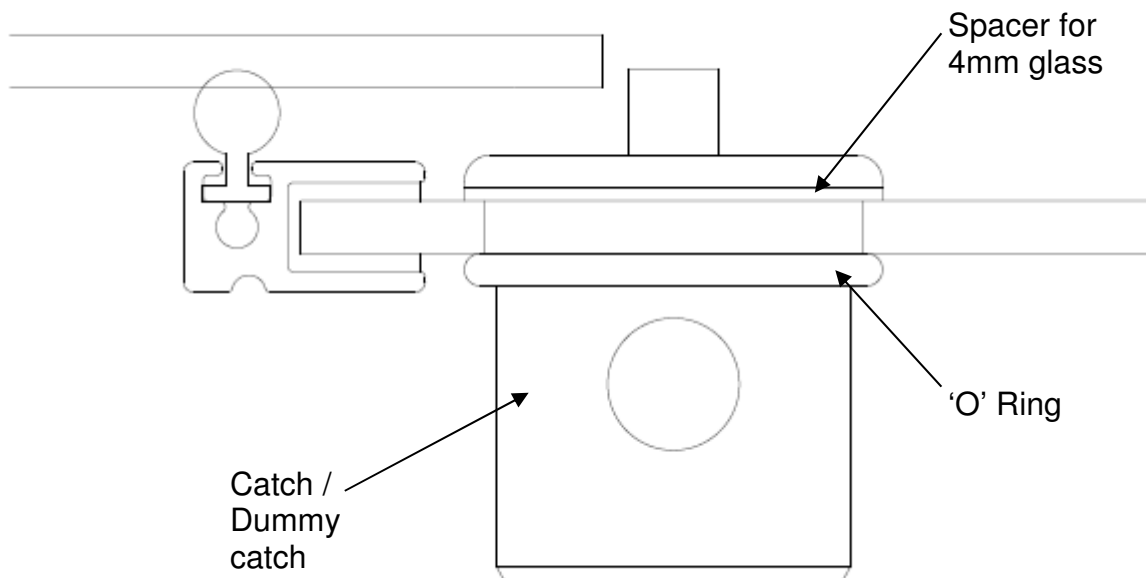
1. Remove entire unit from vehicle.
2. Place on workbench.
3. Unscrew the joint lug screws and keep for re-assembly.
4. Dismantle framework.
5. Slide glasses out of channels.
6. Fit replacement glasses into channels.
7. Re-assembly is the reverse of removal (seal around rail ends with sealant).
8. Check for water ingress.
9. Reseal if required.
10. Check unit operation.
11. End.



## SLIDER WINDOW MAINTENANCE MANUAL

### CATCH / DUMMY CATCH REPLACEMENT (3 & 13)

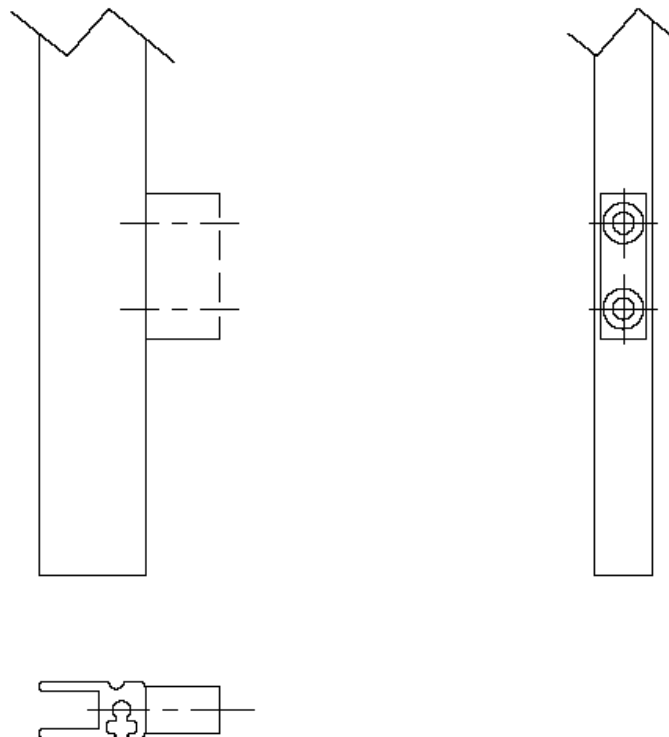
1. Using a flat ended screwdriver prise the 'O' ring off the back of the catch.
2. Remove the catch.
3. Fit replacement catch ensuring to use a spacer if glass thickness is 4mm.
4. Check unit operation.
5. End.



## SLIDER WINDOW MAINTENANCE MANUAL

### CATCH BLOCK REPLACEMENT (12)

6. Unscrew catch block retaining screws into draughttrail.
7. Remove worn catch block.
8. Fit replacement catch block.
9. Screw to draughttrail.
10. Check unit operation.
11. End.





## SLIDER WINDOW MAINTENANCE MANUAL

### SEAL REPLACEMENT (8)

1. Remove entire unit from vehicle.
2. Place on workbench.
3. Unscrew the joint lug screws and keep for re-assembly.
4. Dismantle framework.
5. Slide glasses assemblies out of channels.
6. Slide or prise worn seal out of the foot in the aluminium extrusion with a flat ended screwdriver
7. Slide new replacement seal into the foot in the aluminium extrusion.
8. Re-assembly is the reverse of removal (seal around rail ends with sealant).
9. Check for water ingress.
10. Reseal if required.
11. Check unit operation.
12. End.

